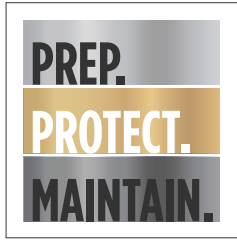




by **DRY TREAT**

**THE SCIENCE PROTECTING BEAUTIFUL SURFACES**



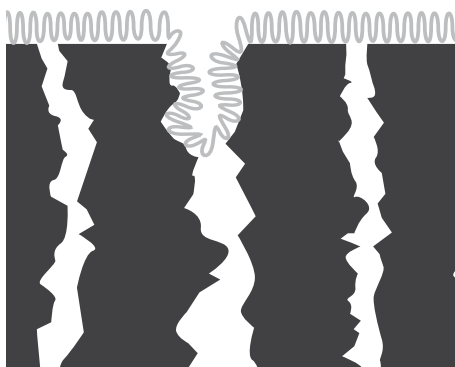
# STAIN-PROOF'S IMPREGNATING SEALERS AND CLEANERS

## THE TECHNOLOGY THAT SETS US APART

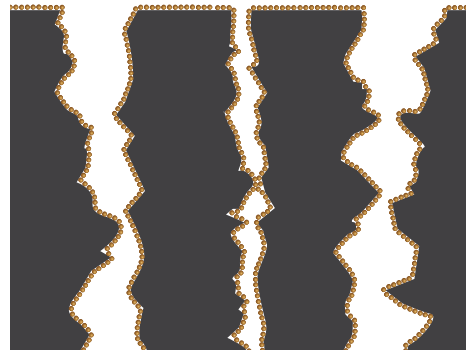
Stain-Proof's world leading impregnating sealers, enhancers and specialty cleaners provide solutions for the care and maintenance of surfaces such as natural stone, bricks, pavers, tiles, engineering concrete and grout.

The special penetrating sealer molecules in our sealers are hundreds of times smaller than the ones in competitor products and penetrate much deeper into the pore structure, even on dense natural stones like granite. Inside the pores, our special sealing molecules bond permanently by chemical reaction, creating a substantial, deep oil and water-repellent barrier.

The deeper Stain-Proof barrier not only provides great surface stain protection, but also protection against more serious common types of damage caused by water ingress (penetration), including efflorescence, salt spalling, freeze-thaw spalling, and picture framing.



 SIZE OF COMPETITORS SEALING MOLECULE



 SIZE OF DRY-TREAT'S SEALING MOLECULE



## STAIN-PROOF AROUND THE WORLD

Stain-Proof impregnating sealers protect hundreds of thousands of homes, commercial buildings and iconic structures in more than 40 countries. The Stain-Proof range of sealers and enhancers have been used on patios, entertaining areas, facades, cladding, pool surrounds and walls for natural stone, paving, bricks, tiles, engineered concrete and grout.



## SEALERS 101

Some basic knowledge of sealers can be important to the maintenance of surfaces and help you to pre-empt and prevent problems from occurring.

## IMPREGNATING / PENETRATING SEALERS - WHAT THEY DO AND DON'T DO

Impregnating sealers work by repelling water, or, water and oil, not by blocking the pores of the material or creating a physical barrier. Because of this:

- Impregnators cannot stop acid etching of acid sensitive surfaces including the following stones: marble, limestone, travertine and onyx. These stones contain calcite, a form of calcium, which reacts and dissolves on contact with acids, even mild acids such as lemon juice, cola and wine. In populated urban areas, rain can be acidic. The use of acid sensitive materials outdoors is not recommended as discoloration and acid damage may occur.
- Impregnators do not make surfaces impervious to staining. Given enough time, or enough pressure, water and oil can penetrate, so spills should be wiped up in a timely manner.
- Impregnators do not provide a physical barrier and therefore do not provide protection from physical wear and tear, scuff marks or dirt being ground into the texture or pits of rough surfaces.

## WHAT MAKES STAIN-PROOF'S SEALERS SPECIAL?

Stain-Proof's sealers are formulated using a unique sealing technology - our sealer molecules are approximately 400+ times smaller than other impregnators and penetrate much further into the pores to form a deeper water and oil repellent barrier. This allows Stain-Proof impregnators to provide more than stain repellence, including premium protection against efflorescence, salt / freeze-thaw spalling and picture framing.

Stain-Proof sealers form permanent chemical bonds inside the pores, becoming part of the internal molecular structure of the treated material for superior longevity, protection and resistance to cleaning and UV light.

Stain-Proof sealers have a sizable advantage in active ingredient levels - up to 70%; compared to 5-10% for common impregnators.



# PREMIUM IMPREGNATING SEALER



Permanent-bonding impregnating sealer designed for use as premium stain protection. Helps protect against efflorescence, picture framing, freeze-thaw damage and salt damage. Treated surfaces are easier to clean and retain breathability, existing color and finish. For indoor, outdoor, residential and commercial use.

## APPLICATIONS

Suitable for a wide variety of indoor and outdoor applications in residential and commercial buildings, including:

- Building Facades
- Swimming Pool
- Floors
- Patios
- Walls
- Garages
- Countertops
- Kitchens
- Showers
- Entertaining Areas

## PACK SIZE

|                 |        |
|-----------------|--------|
| <b>1 QUART</b>  | 110513 |
| <b>1 GALLON</b> | 110533 |
| <b>5 GALLON</b> | 110544 |

## BENEFITS

- Premium water and oil repellence for superior stain protection: Rated Class 5 when tested in accordance with ISO 10545-14: Determination of Resistance to Stain.
- Unique super-penetrating, permanent bonding technology for long lasting protection. 15 year written performance warranty can be provided if applied by a Stain-Proof Accredited Applicator\*.
- Protects against efflorescence, freeze-thaw and salt spalling damage. (NOTE: Softer materials, including limestone, sandstone and travertine in a freeze-thaw or salt water environment need extra protection - use Stain-Proof 40SK Consolidator and Water Repellent).
- Retains natural surface color and finish. Treated surfaces are easier to clean and dry quickly, even after heavy rain.
- Super breathable formula: Water vapor escapes freely, preventing harmful moisture buildup inside the treated material.
- Suitable for indoor, outdoor, residential and commercial use.
- Stands Up To Commercial Cleaning Methods.



\*A fifteen year performance warranty is offered when product is applied by an accredited applicator and surface is maintained regularly, as outlined in our warranty document. Visit our website at [www.stain-proof.com](http://www.stain-proof.com) to find your nearest accredited applicator.

by **DRYTREAT**

PREVIOUSLY  
KNOWN AS:  
**STAIN-PROOF™**  
ORIGINAL



**PERFORMANCE SEALERS**



# PREMIUM WATERBORNE IMPREGNATING SEALER



Premium water and oil stain protection in a waterborne formulation. Provides protection against efflorescence, freeze-thaw and salt damage. Retains breathability, existing color and finish. Use on porous hard surfaces including natural stone, tile, pavers, masonry, concrete and grout. For indoor, outdoor, residential and commercial use, on floors and walls.

## APPLICATIONS

Ideal for a variety of indoor and outdoor surfaces including:

- Kitchens
- Bathrooms
- Living Areas
- Swimming Pools
- Patios

## PACK SIZE

- 1 QUART | 180112
- 1 GALLON | 180133

## BENEFITS

- Short dwell time for quicker application.
- Permanent oil and water repellency for stain protection. Chemically bonds to substrate.
- Superior penetration, breathability, and alkali resistance.
- Treated surfaces are easier to clean.
- Retains Natural Finish And Color.
- Suitable for Natural Stone, Tiles, Pavers, Masonry, Concrete, And Grout.
- For indoor, outdoor, residential and commercial use.



\*A ten year performance warranty is offered when product is applied by an accredited applicator and surface is maintained regularly, as outlined in our warranty document. Visit our website at [www.stain-proof.com](http://www.stain-proof.com) to find your nearest accredited applicator.

by **DRYTREAT**

PREVIOUSLY  
KNOWN AS:  
**STAIN-PROOF  
WATERBORNE**



**PERFORMANCE SEALERS**



# DENSE STONE IMPREGNATING SEALER



Permanent-bonding impregnating sealer designed for premium stain protection from oil and water. Protects against efflorescence, picture framing, freeze-thaw and salt damage. Treated surfaces are easier to clean and retain breathability, existing color and finish. For indoor, outdoor, residential and commercial use.

## APPLICATIONS

Suitable for a variety of countertop surfaces, including:

- Natural stone
- Concrete

## PACK SIZE

16 OZ. | 110712

## BENEFITS

- The next generation sealer, optimized for dense natural stone.
- Permanent premium oil and water repellence. 25-year written performance warranty when applied by a Stain-Proof Accredited Applicator\*.
- Three different custom sealing molecules for 3 levels of penetration and maximum stain repellence.
- Penetrates deeply into dense granites and marbles.
- Retains the natural surface color and finish.
- Super breathable: water vapor escapes freely preventing harmful moisture build-up inside the treated material.
- Suitable for indoor, outdoor, residential and commercial use.



\*A twenty-five year performance warranty is offered when product is applied by an accredited applicator and surface is maintained regularly, as outlined in our warranty document. Visit our website at [www.stain-proof.com](http://www.stain-proof.com) to find your nearest accredited applicator.

by **DRY TREAT**

PREVIOUSLY  
KNOWN AS:  
**STAIN-PROOF™  
PLUS**



**PERFORMANCE SEALERS**



# WATERBORNE DENSE STONE SEALER



Next generation breathable impregnating sealer. The ultimate protection for dense natural stone countertops, floors and wet areas, with the added benefit of protecting grout in a water-based emulsion. Super oil and water repellency for superior stain protection.

## APPLICATIONS

Ideal for a variety of indoor and outdoor surfaces including:

- Kitchens
- Bathrooms
- Entertainment Areas
- Pool Surrounds
- Patios
- Countertops
- Floors
- Walls
- Building facades

## PACK SIZE

- 1 QUART | 180013
- 1 GALLON | 181013

## BENEFITS

- Oil and water repellency for superior stain protection on dense surfaces such as marble and granite. Do not use on resined quartzite.
- Super penetration creates water and oil repellency, which provides protection against stains and many other serious problems caused by water.
- Retains the appearance and color of the surface (test before as cream can slightly darken some substrates)
- Easy, one coat application.
- Makes surfaces easier to clean, keeping them looking new for longer.
- Breathable - water vapor escapes freely.
- Non-drip, waterborne cream. Great for vertical and smooth dense surfaces and floors, indoors or outdoors.



\*A fifteen year performance warranty is offered when product is applied by an accredited applicator and surface is maintained regularly, as outlined in our warranty document. Visit our website at [www.stain-proof.com](http://www.stain-proof.com) to find your nearest accredited applicator.

by **DRYTREAT**

PREVIOUSLY  
KNOWN AS:  
**METACRÉME™**



**PERFORMANCE SEALERS**



# PORCELAIN & QUARTZ SEALER



Creates a unique molecular bond with micro pores of porcelain and quartz surfaces to provide permanent, long lasting protection. Repels oil and water based stains. Holds up to commercial cleaners and processes. For indoor, outdoor, residential and commercial use.

## APPLICATIONS

Suitable for a wide variety of indoor and outdoor applications:

- Engineered stone
- Porcelain
- Quartz

## BENEFITS

- Seals Micro Pores Of Porcelain And Man Made Quartz Surfaces.
- Creates A Unique Molecular Bond.
- Long Lasting Protection.
- Repels Oil And Water Based Stains.
- Non-film Forming And Invisible.

## PACK SIZE

1 QUART | 110600



\*A ten year performance warranty is offered when product is applied by an accredited applicator and surface is maintained regularly, as outlined in our warranty document. Visit our website at [www.stain-proof.com](http://www.stain-proof.com) to find your nearest accredited applicator.

by **DRYTREAT**

PREVIOUSLY  
KNOWN AS:  
**PORCELAIN  
PLUS**



**PERFORMANCE SEALERS**



# WATERBASED PENETRATING SEALER



A penetrating, invisible and breathable water-based sealer that will protect natural stone, tiles, pavers, concrete, grout, floors, driveways, paths, swimming pool surrounds, patios, garages, eating and entertaining areas. Waterbased Penetrating Sealer resists spills from most foods and reduces on-going maintenance.

## APPLICATIONS

Suitable to use indoors  
& outdoors for a wide variety  
of locations including:

- Building Facades
- Floors
- Walls
- Countertops
- Swimming Pools
- Patios
- Garages
- Kitchens
- Entertaining Areas

## PACK SIZE

- 1 QUART | 111512
- 1 GALLON | 111532

## BENEFITS

- Treated Surfaces Are Easier To Maintain.
- Easy Single Coat Application.
- Penetrating, Invisible And Breathable.



by **DRY TREAT**

PREVIOUSLY  
KNOWN AS:  
**STAIN-REPELLA™**



**PERFORMANCE SEALERS**



# COLOR ENHANCING SEALER



Premium oil & water based stain protection that provides deep color enhancement. Cured treated surfaces suitable for food equipment contact. For indoor, outdoor, residential & commercial use.

## APPLICATIONS

Ideal for a variety of indoor and outdoor surfaces including:

- Floors
- Walls
- Cladding
- Facades
- Countertops
- Patios
- Driveways
- Paths
- Garages
- Kitchens
- Entertaining areas.

As well as an array of porous surfaces including:

- Natural stone
- Clay & terracotta tiles & pavers
- Brick
- Concrete
- Polished concrete
- Terrazzo
- Encaustic tile
- Terracotta
- Saltillo

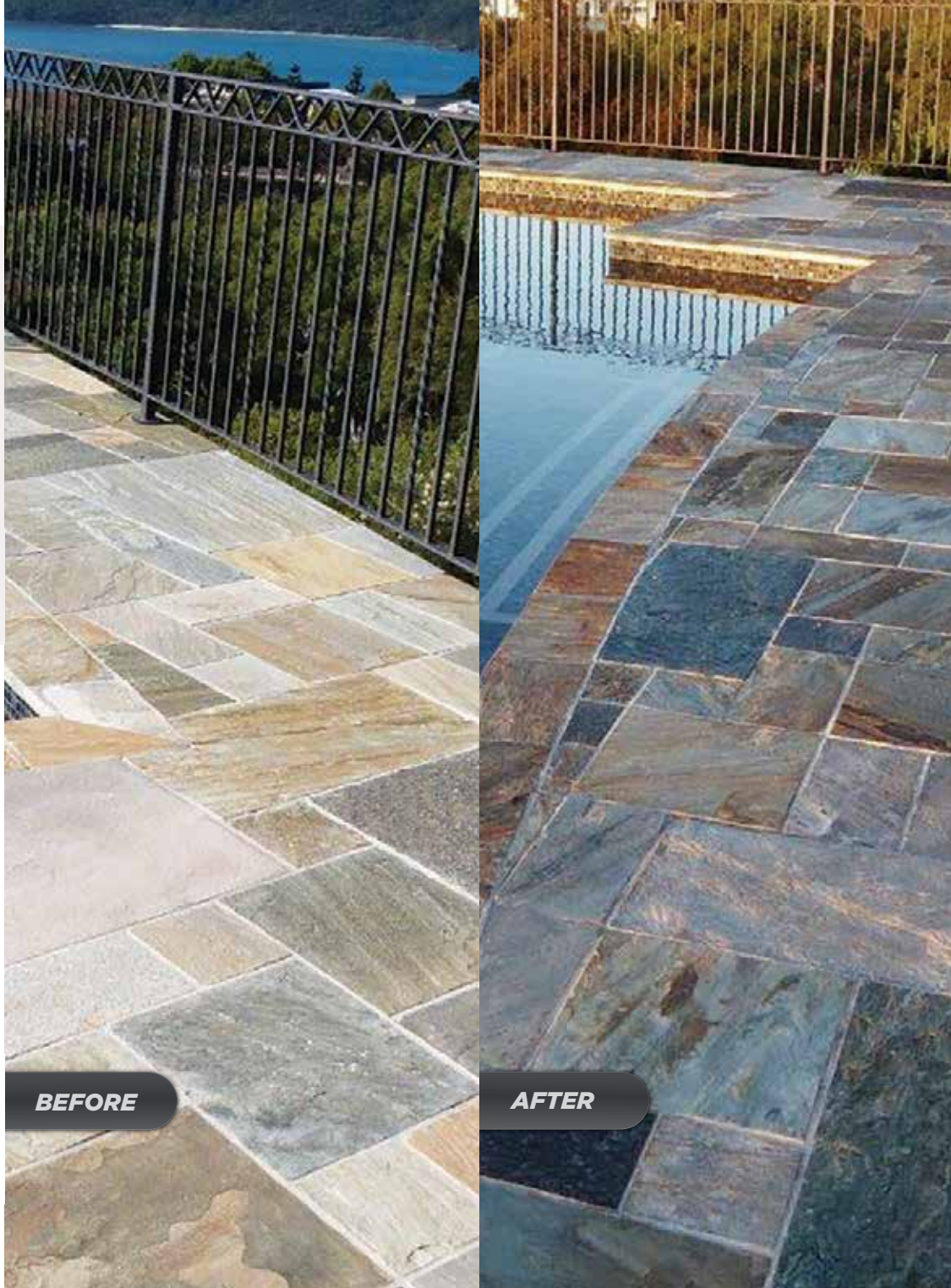
## BENEFITS

- Deep color enhancement.
- Super oil and water repellency for long lasting stain protection. ISO 10545-14 Class 5 (best possible resistance to stains), greater than 98% reduction in 24-hour water up-take (Rilem method).
- Longer lasting, even outdoors under UV light.
- Easy to apply. Additional coats can be applied at any time in the future to a cleaned surface.
- Retains surface hardness and wet slip resistance of porous flooring materials.
- Will not flake, yellow, crack, blister or break down in alkali environments and reduces concrete dusting.
- Treated surfaces dry quickly making a waterless environment for bio-films.

## PACK SIZE

**1 QUART** | 130812

**1 GALLON** | 130832



\*A five year performance warranty is offered when product is applied by an accredited applicator and surface is maintained regularly, as outlined in our warranty document. Visit our website at [www.stain-proof.com](http://www.stain-proof.com) to find your nearest accredited applicator.

by **DRYTREAT**

PREVIOUSLY  
KNOWN AS:  
**INTENSIFIA™**



**ENHANCERS**



# PAVER ENHANCING SEALER



Offering both rich color enhancement and water and liquid protection through a patented combination of silicone technology. The result is a long-lasting, penetrating oil and water repellent that deepens and enriches the natural color of, concrete pavers, cement tiles, terrazzo floors, and cement surfaces.

## APPLICATIONS

Ideal for a variety of indoor and outdoor surfaces including:

- Driveways
- Floors
- Patios
- Pool Decks
- Cladding
- Pathways
- Concrete Countertops

## PACK SIZE

- 1 QUART | 150852
- 1 GALLON | 150812
- 2.5 GALLON | 150832

## BENEFITS

- For Man-Made Pavers or Cement Man-Made Tiles & Cement Floors.
- Intense Color Enrichment With Oil And Water Repellency.
- Fully Impregnating With No Sheen Or Shine.
- Does Not Affect Slip Rate - Slip Testing (ANSI137.1).



**BEFORE**

**AFTER**

by **DRYTREAT**

**ENHANCERS**



# 40SK CONSOLIDATOR & WATER REPELLENT



Provides premium protection against ingress of water and dissolved salts, efflorescence, freeze thaw, salt spalling and alkali silica reactions. Strengthens materials such as sandstone, limestone, travertine and concrete. Suitable for old and new building facades, pavers, blockwork, flooring, and cladding. 40SK Sealer retains the breathability, existing color and finish.

## APPLICATIONS

Ideal for a variety of indoor & outdoor surfaces including:

- Building facades
- Floors
- Walls
- Pool surrounds
- Patios
- Garages
- Kitchens
- Entertaining areas

## PACK SIZE

- 1 GALLON | 123122
- 5 GALLON | 123142

## BENEFITS

- Helps Reduce Water And Waterborne Salts, Efflorescence, Salt Spalling, Freeze-thaw & Picture Framing.
- Consolidator For Softer Material, Such As Sandstone, Limestone, Travertine, Concrete & Precast Around Salt Water Pools.
- Protects Against Water Ingress.
- Retains Natural Color & Finish.



\*A fifteen year performance warranty is offered when product is applied by an accredited applicator and surface is maintained regularly, as outlined in our warranty document. Visit our website at [www.stain-proof.com](http://www.stain-proof.com) to find your nearest accredited applicator.

by **DRYTREAT**

PREVIOUSLY  
KNOWN AS:  
**DRY-TREAT  
40SK™**



**SPECIALTY SEALERS**



# BOTANICAL COUNTERTOP CLEANER



Formulated with only botanically-sourced or sustainable ingredients, this streak-free daily cleaner is safe and effective on a wide range of surfaces. It contains no solvents, such as butyls, ammonia, glycol ethers; nor any dyes, fragrances, petrochemicals, or other hazardous additives. A smart choice for everyday cleaning without compromise.

## APPLICATIONS

Ideal for everyday cleaning on a wide variety of indoor & outdoor surfaces including:

- Natural stone
- Quartz
- Porcelain
- Terrazzo
- Concrete
- Stainless Steel

## PACK SIZE

32 OZ. | 141112

## BENEFITS

- Multi-Surface, Streak-Free
- Food Prep Safe
- Gentle On Hands
- Fragrance Free
- Effective Beyond Countertops:  
Use On Appliances, Fixtures & More

# DAILY FLOOR CLEANER

Indoor and outdoor cleaner for natural stone, tile, grout and other hard surfaces. With three types of natural enzymes, it cleans general grime and stains from oil, mold\*, food and beverages.



## BENEFITS

- Indoor/outdoor cleaner for natural stone, tile, grout and other hard surfaces.
- Natural enzymes clean stains from oil, mold\*, food and beverages.
- For light to heavy cleaning & stain removal.

*\*For the cleaning and removal of mold stains, dirt and inanimate particulate. No claim is made by these products to prevent, destroy, repel or mitigate any living organism.*



## APPLICATIONS

Recommended for cleaning indoor surfaces including:

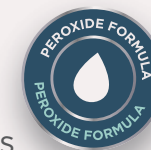
- All natural stone (including acid sensitive, calcite based stones such as marble and limestone)
- Porcelain, ceramic & clay tile
- Grout
- Vinyl & unfinished wood (with no stain, oil or other coatings)

## PACK SIZE

1 QUART | 141812



# SMC PEROXIDE CLEANER



A unique, ready-to-use hydrogen peroxide based cleaner that is specifically designed for cleaning stubborn organic stains and deeply imbedded dirt on porous stone and masonry.

## APPLICATIONS

Specifically designed for cleaning stubborn organic stains and deeply embedded dirt in porous stone and masonry.

## PACK SIZE

|            |        |
|------------|--------|
| 1 QUART    | 151010 |
| 2.5 GALLON | 151000 |

## BENEFITS

- A revolutionary cleaner for stone & masonry.
- Deep penetrating, foaming and lifting action.
- 7.5 pH - will not harm most stone and masonry substrates.
- Fast acting formula.
- Restores stone and masonry to its original look.
- Ideal for historic preservation, historic buildings, monuments, tombstones, sculptures and other architectural surfaces.
- A true labor saver.
- For interior and exterior use.
- Ready to use.

PREVIOUSLY  
KNOWN AS:  
**S-TECH™**  
**STONE & MASONRY  
CLEANER**



# SMC PEROXIDE CLEANER ADDITIVE

A powerful additive that enhances the stain removal, lifting, and cleaning power of SMC Peroxide Cleaner. Ideal for severely stained and soiled stone and masonry surfaces that require extreme cleaning and powerful stain removal. SMC Additive works by instantly increasing the oxidation potential of SMC Peroxide Cleaner.

## BENEFITS - when added to SMC Peroxide Cleaner, SMC Additive provides:

- Extra cleaning power.
- Extra lifting power.
- Extra stain removing power.
- Extra labor savings.

PREVIOUSLY  
KNOWN AS:  
**S-TECH™**  
**SMC BOOST**



## APPLICATIONS

Specifically designed for cleaning stubborn organic stains and deeply embedded dirt in porous stone and masonry.

## PACK SIZE

1 QUART | 152000



**HEAVY DUTY CLEANERS**

# ACIDIC CLEANER

Removes efflorescence, grout haze, rust marks, limescale, soap scum, fireplace soot and mortar residue. For non-acid sensitive: stones, pavers, tiles, bricks & masonry. Safer to use than Muriatic Acid - non-fuming formula.



## BENEFITS

- The power of Muriatic Acid without the fumes.
- Highly effective for removing efflorescence, grout haze, rust marks, soap scum, limescale and excess mortar.
- Chemically etches acid sensitive surfaces for added traction.

## APPLICATIONS

Suitable for a range of non-acid sensitive stones and other hard surfaces including:

- Granite
- Slate
- Basalt
- Brick
- Terracotta
- Floors
- Walls
- Facades
- Showers
- Masonry
- Brickwork
- Ceramic & porcelain tile

PREVIOUSLY  
KNOWN AS:  
**EFF-ERAYZA™**



## PACK SIZE

1 QUART | 141912



**HEAVY DUTY CLEANERS**

# ALKALINE CLEANER



A powerful triple action, oxygen, alkaline and detergent boosted heavy duty cleaner for removal of general grime and stains caused by oil / grease, mold\*, leaf marks, food and beverages. Suitable for all natural stone, tile, masonry, concrete, brick, grout, vinyl, and raw / unfinished wood.



## BENEFITS

- Up to 500 sq ft / 50 sq m. of Peroxide Cleaning Power.
- Can be used as poultice for stubborn stains.
- For indoor or outdoor surfaces including floors, walls patios, facades, decks, garages, driveways, brick, natural stone, concrete, grout & masonry.

*\*For the cleaning and removal of mold stains, dirt and inanimate particulate. No claim is made by these products to prevent, destroy, repel or mitigate any living organism.*

PREVIOUSLY  
KNOWN AS:  
**OXY-KLENZA™**



## PACK SIZE

**2.2 LB.** | 141212

## APPLICATIONS

Ideal for a variety of indoor & outdoor surfaces including:

- Patios
- Building facades
- Decks
- Cladding
- Garages
- Driveways
- Entertaining areas

Suitable for domestic & commercial cleaning of hard surfaces including:

- All natural stone (including acid sensitive, calcite based stones such as marble and limestone)
- Porcelain, ceramic and clay tile
- Brick, masonry, concrete and grout
- Vinyl and unfinished wood (with no stain, oil or other coatings)

# STAIN-PROOF

CARE + MAINTENANCE SOLUTIONS

by DRYTREAT



6.25.26



150 Dascomb Rd, Andover, MA 01810, USA • 1866 667 5119  
67 Assembly Drive, Tullamarine Vic 3043, Australia • 1800 786 617

[www.stain-proof.com](http://www.stain-proof.com) | [info@drytreat.com](mailto:info@drytreat.com) | Stain-Proof, a division of ICP

Stain-Proof is a proud member of the following associations:

