

Specifier's Guide: Coastal Homes



Protect against salt attack

Fully breathable impregnating consolidator strengthens softer, highly porous materials by approximately 30 to 40% and creates a deep water repellent layer inside the material.

Product	Protection	Low-VOC	Lifespan
DRY-TREAT 40SK™ Consolidator and freeze-thaw/salt spalling protection for softer, more porous materials	<ul style="list-style-type: none"> Freeze-thaw/salt spalling (salt attack) Permanent water repellence Strengthens treated surfaces by 30% - 40% Efflorescence 	Yes	15-year** Warranty

** If applied by an accredited applicator

All softer, more porous materials, such as limestone, travertine and sandstone, around salt water pool, coastal regions or in a freeze-thaw environment should be treated with Dry-Treat 40SK.



Salt spalling on travertine around a saltwater pool



DRY-TREAT 40SK™

Seal

Fully breathable impregnating / penetrating sealers providing premium oil and water repellence. These impregnators do not form a film and do not change the natural look or texture of the surface.

Product	Protection	Low-VOC	Lifespan
STAIN-PROOF™ Original Permanent, invisible impregnating sealer	<ul style="list-style-type: none"> Permanent water and oil-based stain repellence Efflorescence Freeze-thaw/salt spalling* 	No	15 Years** Warranty
METACRÈME™ Permanent, invisible, water-based impregnating sealer	<ul style="list-style-type: none"> Permanent water and oil-based stain repellence Efflorescence Freeze-thaw/salt spalling* 	Yes - LEED Compliant	15 Years** Warranty

* For softer, more, porous materials use DRY-TREAT 40SK | ** If applied by an accredited applicator | † Depending on surface use & traffic



Unsealed

Sealed



Dry-Treat™
STAIN-PROOF™ Original



Dry-Treat™
METACRÈME™

For coverage rates please refer to the Product Coverage Guide to calculate the amount of product required.

Specifier's Guide: Coastal Homes

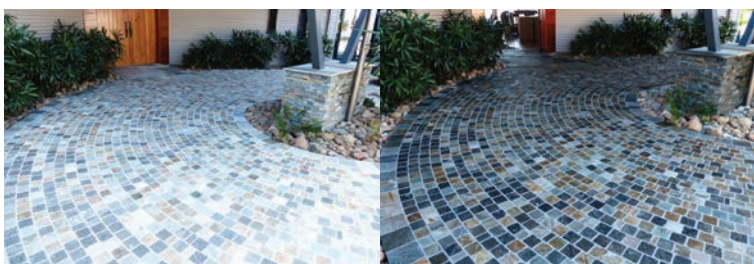


Enhance and seal

Fully breathable impregnating enhancer enriches the color of natural stone and other hard porous surfaces, and provides premium oil and water repellence. Dry-Treat enhancers do not form a coating like traditional enhancers and do not yellow, whiten, crack or peel. After a few years when the enhancement starts to fade, simply clean and recoat, with no stripping required.

Product	Protection	Low-VOC	Lifespan
INTENSIFIA™ Color enhancer & sealer for medium to dense surfaces	<ul style="list-style-type: none"> Premium water and oil repellence 	Yes - LEED Compliant	5 Year Warranty**

** If applied by an accredited applicator



Before

After



Dry-Treat™
INTENSIFIA™

Clean

Powerful, safer environmentally responsible cleaners.

Product	Cleans
Eff-Erayza™ Powerful, safer acid cleaner	<ul style="list-style-type: none"> Efflorescence Rust marks Grout haze Limescale Mortar mess Fireplace soot
Oxy-Klenza™ Outdoor surface cleaner	<ul style="list-style-type: none"> Stains from oil, mold, food and beverage, and leaf marks

Note: EFF-ERAYZA™ is acidic / corrosive and will etch and pit acid sensitive surfaces such as marble, limestone, travertine, some concrete / grout products and some metals including aluminium. Do not allow product to come in contact with any non-recommended surface.

Efflorescence removal



Before

After



HANAFINN™
Eff-Erayza™

General cleaning



Before

After



HANAFINN™
Oxy-Klenza™

A comprehensive surface maintenance guide is available on the Dry-Treat website: www.drytreat.com/quickdocs.html

For coverage rates please refer to the Product Coverage Guide to calculate the amount of product required.